

FOCUS ON CONSERVATION

LOGAN SOIL & WATER CONSERVATION DISTRICT

"It is the goal of Logan Soil & Water Conservation District to promote stewardship of soil, water and other natural resources."

2018 TREE SALE UNDERWAY

WINTER 2018



Logan SWCD is offering an assortment of tree packets for sale to urban and rural landowners. The plant varieties are selected for their popularity and hardiness in the Logan County area and seed mixes to attract pollinators. We feel that the species of seedlings we are offering are better suited for our local growing conditions.

Trees provide food and cover for wildlife. The following trees and shrubs are great for animals and birds through winter, spring, summer and fall. Our seedlings are 1-2 years old and are packaged in groups of ten. This is an economical way to work toward establishing or adding to a wildlife area, to create a windbreak, or landscape. Please see the enclosed order form for prices and deadline information.

TREE DESCRIPTIONS



American Arborvitae

A dense, flat green pyramidal tree. It has feather-like, yellowish-green needles with blunt tips. Has a medium growth rate and grows 40-60 ft. high. Useful as a windbreak and wildlife habitat.



American Sycamore

One of the biggest, sturdiest & most durable of North America hardwoods. It's most striking feature is it's unique bark, resembling the camouflage of a soldier's uniform. Height: 80-100 ft. Does well in most soils.



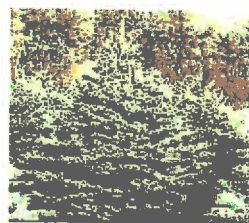
Black Walnut

One of the most valuable native trees. Heavy, strong, durable heartwood, in great demand for veneers, cabinet making. Nuts are eaten by humans, twigs and nuts are eaten by wildlife. 70-100 ft.



Bur Oak

A massive, majestic Oak and native to Ohio. May reach 90 ft. tall and 80 ft. wide. Large, leathery leaves. Deer enjoy the acorns the Bur Oak produces.



Colorado Blue Spruce

Needles are stout and prickly 3/4- 1 1/4 inches long, rich green to bluish green. Moderate growth rate.



Dogwood (White Flowering)

Produces creamy white blossoms in spring and red berries in autumn & winter that are enjoyed by wildlife. Height: 10-20 ft.



Hazelnut (American)

A shrub with broad heart-shaped 2-5" leaves. Leaves turn orange & purple in the fall. Has male & female flowers. Male flowers hang in long pendulum stalks (catkins). Wildlife and humans enjoy the edible nuts. Height: 10'.



Lilac (Common)

A fast growing, shrub that blooms. The purplish-white flowers appear in mid to late May, sometimes continuing into June. Grows 6-10 feet in height. Excellent for wildlife. Easy to grow, & seldom bothered by pests.



Norway Spruce

Needles are dark green, 1/2 - 1 inch long. The twigs and branchlets hang downward. The only spruce with drooping branchlets and the only one with large cones. Height is 60-90 feet. Useful for wildlife habitat.



Pin Oak

A fast growing, large maturing shade tree which has an oval-pyramidal shape. Leaves are a deeply lobed, glossy dark green in summer. Fall color ranges from red to brown. Utilized by many game species. Pin oak is commonly planted for food plots.



Red Oak

Leaves turn a vibrant red in autumn. Fast growth, up to 2 ft. per year. Prefers sandy loam acidic soils in full sun. Wildlife enjoys the acorns that are produced. Height: 65-100 ft. Good for timber & firewood.



Shagbark Hickory

A slow growing but potentially massive tree that prefers deep, moist, rich well-drained soil and sunny areas. Virtually disease and pest free, fruits, etc. great for wildlife. Suited more for a woodland area rather than a yard.



Sugar Maple

A native tree that has dark green foliage turning yellow to orange to fiery red in fall. Grows in most types of soils. The sap is used to make maple syrup. Slow to medium growth. Height 40-60 feet.



Silky Dogwood

A shrub native to Ohio. Prefers moist, wet sites but adapts to dry soils in summer & fall. Twigs in winter are a reddish-purple. Wildlife enjoy the berries it produces. 10ft. by 10ft.



Swamp White Oak

Happiest when its getting it's feet wet, but is surprisingly drought tolerant. Height: 50'. Provides housing and food for birds and mammals.



Sweet Gum

Star shaped leaves turning to brilliant reds, oranges, yellows & purples in autumn. Sweet Gum are extremely resistant to pests & diseases. Birds enjoy the seed capsules. Height: 60-90 ft.



Tulip Poplar

One of the tallest hardwoods. Long straight trunk, narrow crown & beautiful flowers resembling tulips. Leaves turn yellow in fall. Lumber is used to build toys, furniture, instruments. Height: 80-100 ft.



White Oak

A tall tree with rather evenly lobed hairless leaves that may be somewhat whitened underneath. Growth is good, best on deep, well drained loamy soils. Height is 60-80 ft. Can be used in a windbreak. Good for timber & firewood.



White Pine

Needles are in 5's, 3-5 inches long, soft texture, rich green. Fast growth rate. Height up to 100 feet. Good as a windbreak.



Bee Feed Wildflower Mix

A blend of annual and perennial flowers that provide nectar & pollen to wild bees, honey bees & other pollinators. Blooms early summer to fall. 4 oz. poly bag seeds approx. 1,350 square feet.



Bird & Butterfly Seed Mix
The flowers in this blend attract Hummingbirds and butterflies all summer long. The heavy reseeding annuals act as a natural food source for songbirds all winter. 4 oz. poly bag seeds 1,350 square feet.



Tree Protectors
Translucent tubes provide a protected, growth-friendly environment for seedlings. Offers protection against wind, animals, birds and sprays.

2018 CTC FARMER BREAKFAST MEETINGS

The 2018 Conservation Tillage Breakfast Meetings (CTC) have begun. The farmer breakfast meetings are held at the Plaza Inn, Mt. Victory with the breakfast beginning at 7:30 AM and the meetings starting at 8:00 AM.

Dates and topics are:

- ◆ January 9th –CAUV Property Changes –Hardin, Logan and Union County Auditors
- ◆ January 23rd –Worldwide Grain Markets 10 Year Forecast & Farmers' Grain Marketing Toolkit –Ben Brown, OSU Farm Management Program
- ◆ February 6th –Climate & Weather –Dr. Aaron Wilson, OSU Byrd Polar & Climate Research Center
- ◆ February 20th –Soybean Populations –Dr. Elizabeth Hawkins, OSU Extension Field Specialist, Agronomic Systems

Logan SWCD Annual Meeting Highlights

The Logan Soil and Water Conservation District's 74th annual meeting was held August 31st at Winner's Harvest Barn. We were happy to have the opportunity to again join with Logan County Farm Bureau for their annual meeting.

- ◆ Candidates for two supervisor positions were : Frank Phelps, Joe Ramsey and Judy Skidmore.
- ◆ Frank Phelps and Joe Ramsey were each re-elected to serve another 3 year term.
- ◆ Pheasants Forever Chapter #285 were honored as Cooperator of the Year.

A big thank you to Judy Skidmore for running for the Logan SWCD Supervisor positions.

Introducing.....



Linnea Rowse recently joined Pheasants Forever as a Farm Bill Wildlife Biologist in central Ohio, for Champaign, Clark, Logan, Madison, and Union counties. She will be working out of the USDA Service Center offices in those counties, in partnership with the USDA - Natural Resources Conservation Service and Ohio Department of Natural Resources. She comes to Ohio from a recent position in northern New York, where she worked in a similar capacity to conserve young forest habitat for Golden-winged Warblers. Linnea received her B.S. in Wildlife and Conservation Biology from the University of Rhode Island in 2008, and her M.S. in Environment and Natural Resources from The Ohio State University in 2013. She has

been working in the wildlife and conservation field for 9 years, and has a wide variety of experience in wildlife ecology, with a special interest in bird conservation. When not in the office, you will find Linnea hiking, birding, and generally spending time outdoors. She looks forward to meeting and working with landowners to address resource concerns; Linnea is passionate about finding the intersection between agricultural production and soil, water, and wildlife conservation goals.

(Excerpt from the Logan County Homeowner's Guide)

The majority of land located in Logan County is nearly level and moderately sloping, dissected in some areas with small rivers and streams. Wetness is a major limitation within the county. The hazard of erosion is generally severe on sloping to steep soils and along stream valleys. Drainage problems may occur if a lot is located in a floodplain of a nearby stream, or in a natural drainage way. Even upland areas, flooding can occur if the proposed building is located on a site that is lower than the surrounding area.

- * Are the natural features of the lot acceptable? (drainage, wet areas, trees, streams, etc.)
- * Can acceptable natural features be preserved at a reasonable cost?
- * Is the property located in a floodway/floodplain/wetland area?
- * Could there be runoff problems from adjacent properties?
- * Should a natural buffer be maintained for protection of a water body?
- * Are trees located on the site that could be saved for shade, wildlife and protection?
- * What is the prevailing wind direction? (a windbreak planting may be beneficial)
- * Will you be considering geothermal heating or solar energy?
- * Are there any current or proposed drainage improvements covered by a maintenance program?
- * Is the property located near a natural or a modified channel? That picturesque wooded stream may require extensive modification to accommodate increased runoff resulting from land use changes?

2018 TREE PACKET ORDER FORM

NAME _____ PHONE _____

ADDRESS _____ CITY _____

ZIP _____

MAKE ORDERS PAYABLE TO:

Logan SWCD

324 Co. Rd. 11

Bellefontaine, Ohio 43311

SEEDLINGS ARE 10 PER PACKET ***ALL SALES ARE FINAL*** NO REFUNDS

PACKET NAME	# OF PACKETS	PRICE	TOTAL
1. American Arborvitae (white cedar)		\$10.00	
2. American Sycamore		\$10.00	
Black Walnut		\$10.00	
4. Bur Oak		\$10.00	
Colorado Blue Spruce		\$10.00	
6. Dogwood (White Flowering)		\$10.00	
7. Hazelnut (American)		\$10.00	
8. Lilac (Common)		\$10.00	
9. Norway Spruce		\$10.00	
10. Pin Oak		\$10.00	
Red Oak		\$10.00	
12. Shagbark Hickory		\$10.00	
Silky Dogwood		\$10.00	
14. Sugar Maple		\$10.00	
Swamp White Oak		\$10.00	
16. Sweet Gum		\$10.00	
Tulip Poplar		\$10.00	
18. White Oak		\$10.00	
White Pine		\$10.00	
20. Bee Feed Wildflower Mix-4 oz.		\$17.00	
21. Bird & Butterfly Wildflower Mix -4 oz.		\$17.00	
22. Tree Shelters -ht.-4', diam. 4" includes stake, tie		\$ 6.00	
Deadline for placing order is March 12, 2018			

Payment must accompany order - cash or checks accepted-please make checks payable to: Logan SWCD
 Cannot accept debit or credit cards

LOGAN SWCD OFFICE USE ONLY

Payment Date: _____ Total: _____

Receipt #: _____ Cash _____ Check # _____

LOGAN SWCD/NRCS
324 C. Rd. 11
Bellefontaine, Oh
43311

NON-PROFIT ORGANIZATION
U S POSTAGE
BELLEFONTAINE, OH
PERMIT NO. 324

Phone: 937-404-3150
www.co.logan.oh.us/soilandwater/
Logan SWCD Hours:
Monday-Friday 7:30 AM-4:30 PM

LOGAN SWCD SUPERVISORS

Eric Johnson David Knight Tim Lyden

Frank Phelps Joe Ramsey

LOGAN SWCD STAFF

Lorre Culp - Secretary/GIS

Deb Roberts - District Administrator

Steve Searson - District Technician

USDA/NRCS STAFF

Leisha Billenstein - District Conservationist

LaRae Baker - NRCS Resource Conservationist

Linnea Rowse - Pheasants Forever Biologist

ADDRESS SERVICE REQUESTED

An Equal Opportunity Provider and Employer

DATES TO REMEMBER

- January 8- Logan SWCD Tree Sale Begins
- January 10 - CTC Breakfast Meeting -7:30 AM, Plaza Inn, Mt. Victory;
- January 15- Martin Luther King Day- Office Closed
- January 16- Logan SWCD board meeting - 5:00 PM-Logan SWCD office
- January 23- CTC Breakfast Meeting, 7:30 AM, Plaza Inn, Mt. Victory
- February 6- CTC Breakfast Meeting -7:30 AM, Plaza Inn, Mt. Victory
- February 19- President's Day-Office Closed
- February 20- CTC Breakfast Meeting -7:30 AM, Plaza Inn, Mt. Victory;
- February 20- Logan SWCD board meeting - 5:00 PM - Logan SWCD office
- March 12 - Deadline for Tree Sale orders
- March 20- Logan SWCD board meeting - 8:00 AM - Logan SWCD office



Want to be friends? We sure hope so!
Please "Like" us on Facebook.

We're on the Web!

www.co.logan.oh.us/454/Soil-Water-Conservation-District

If you would like to receive our newsletter electronically, please send your request to:
deb.roberts@oh.nacdnet.net